



# NPT

ANSI

## ROSCA STANDARD AMERICANA

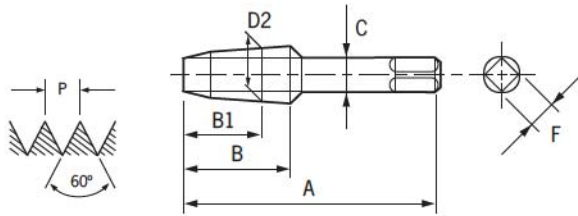
REFERÊNCIA	108/A	108/G IRT
GRUPO DE MATERIAIS	1.1.1 - 1.2.1 - 1.2.2 - 1.2.3 - 1.4.1 - 1.4.2 1.6.1 - 2.1.1 - 2.1.2 - 3.1.4 - 3.1.5 - 3.1.6 3.2.1 - 3.2.2 - 3.2.3 - 3.2.4 - 4.1.1	1.2.1 - 1.5.2
TIPO DE FURO		

### OSG MACHOS ROSCA STANDARD AMERICANA CÔNICA PARA TUBO

Para Roscas com Materiais de Vedação : ANSI B2.1


### OSG AMERICAN STANDARD TAPER PIPE TAPS

For Threads with Sealing Material : ANSI B2.1



ESPECIFICAÇÃO DO PRODUTO



NPT ANSI B2.1											EDP	
D	N/1"	D2 mm	A in	B in	B1 in	C in	F in	Nº de Canais		PESO g		
1/16	27	7.142	2 1/8	11/16	.472	.3125	.328	4	6.2	11	00557210	00577210
1/8 *(Lg. Shk.)	27	9.489	2 1/8	3/4	.474	.4375	.328	4	8.40	20	00557220	00577220
1/8 *(SM. Shk.)	27	9.489	2 1/8	3/4	.474	.3125	.234	4	8.40	20	00557230	00577230
1/4	18	12.487	2 7/16	1 1/16	.687	.5625	.421	4	11.1	20	00557240	00577240
3/8	18	15.926	2 9/16	1 1/16	.694	.7000	.531	4	14.3	65	00557250	00577250
1/2	14	19.772	3 1/8	1 3/8	.899	.6875	.515	4	17.9	120	00557260	00577260
3/4	14	25.117	3 1/4	1 3/8	.904	.9063	.679	5	23	230	00557270	00577270
1	11 1/2	31.461	3 3/4	1 3/4	1.078	1.1250	.843	5	29	410	00557280	00577280
1 1/4	11 1/2	40.218	4	1 3/4	1.106	1.3125	.984	5	37.7	740	00557290	00577290
1 1/2	11 1/2	46.287	4 1/4	1 3/4	1.119	1.5000	1.125	7	44	1180	00557300	00577300
2	11 1/2	58.325	4 1/2	1 3/4	1.103	1.8750	1.406	7	56	1550	00557310	00577310

\* Se não especificado, os machos serão fornecidos com haste grossa

\* Unless otherwise specified, taps with large shank will be furnished

108/A TiN	108/A VX	108/A VX 15°	108/A GGMS
1.1.1-1.2.1-1.2.2-1.2.3 2.1.1-2.1.2-3.1.4-3.1.6 3.1.7-3.2.1-3.2.4	1.2.1-1.2.2-1.4.1 1.5.2-1.6.1-3.1.5	1.2.1-1.2.2-1.4.1 1.5.2-1.6.1-3.1.5	2.1.1-2.1.2-3.1.6 3.1.4-3.2.4-4.1.2
			
			
 	 	  	 
EDP			
00557214	00597210	00617210	00637210
00557224	00597220	00617220	00637220
00557234	00597230	00617230	00637230
00557244	00597240	00617240	00637240
00557254	00597250	00617250	00637250
00557264	00597260	00617260	00637260
00557274	00597270	00617270	00637270
00557284	00597280	00617280	00637280
00557294	00597290	00617290	00637290
00557304	00597300	00617300	00637300
00557314	00597310	00617310	00637310

MACHOS  
TAPS

# NPTF

ANSI

## ROSCA STANDARD AMERICANA

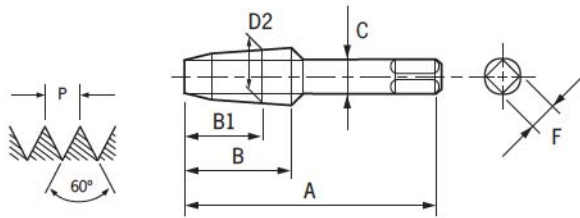
REFERÊNCIA	108/F	108/G IRT
GRUPO DE MATERIAIS	1.1.1 - 1.2.1 - 1.2.2 - 1.2.3 - 1.4.1 - 1.4.2 1.6.1 - 2.1.1 - 2.1.2 - 3.1.4 - 3.1.5 - 3.1.6 3.2.1 - 3.2.2 - 3.2.3 - 3.2.4 - 4.1.1	1.2.1 - 1.5.2
TIPO DE FURO		

### OSG MACHOS ROSCA STANDARD AMERICANA CÔNICA PARA TUBO

Para Roscas sem Materiais de Vedação : ANSI B2.2

### OSG AMERICAN STANDARD TAPER PIPE TAPS

For Threads without Sealing Material : ANSI B2.2



ESPECIFICAÇÃO DO PRODUTO



NPTF ANSI B2.2											EDP	
D" in	N/1"	D2 mm	A in	B in	B1 in	C in	F in	Nº de Canais		PESO g		
1/16	27	7.142	2 1/8	11/16	.472	.3125	.328	4	6.2	11	00567210	00587210
1/8 *(Lg. Shk.)	27	9.489	2 1/8	3/4	.474	.4375	.328	4	8.4	20	00567220	00587220
1/8 *(SM. Shk.)	27	9.489	2 1/8	3/4	.474	.3125	.234	4	8.4	20	00567230	00587230
1/4	18	12.487	2 7/16	1 1/16	.687	.5625	.421	4	11.1	20	00567240	00587240
3/8	18	15.926	2 9/16	1 1/16	.694	.7000	.531	4	14.3	65	00567250	00587250
1/2	14	19.772	3 1/8	1 3/8	.899	.6875	.515	4	17.9	120	00567260	00587260
3/4	14	25.117	3 1/4	1 3/8	.904	.9063	.679	5	23	230	00567270	00587270
1	11 1/2	31.461	3 3/4	1 3/4	1.078	1.1250	.843	5	29	410	00567280	00587280
1 1/4	11 1/2	40.218	4	1 3/4	1.106	1.3125	.984	5	37.7	740	00567290	00587290
1 1/2	11 1/2	46.287	4 1/4	1 3/4	1.119	1.5000	1.125	7	43,5	1180	00567300	00587300
2	11 1/2	58.325	4 1/2	1 3/4	1.103	1.8750	1.406	7	56	1550	00567310	00587310

\* Se não especificado, os machos serão fornecidos com haste grossa

\* Unless otherwise specified, taps with large shank will be furnished


108/F TiN	108/F VX	108/F VX 15°	108/F GGMS
1.1.1-1.2.1-1.2.2-1.2.3-2.1.1-2.1.2 3.1.4-3.1.6-3.1.7-3.2.1-3.2.4	1.2.1-1.2.2-1.4.1 1.5.2-1.6.1-3.1.5	1.2.1-1.2.2-1.4.1 1.5.2-1.6.1-3.1.5	2.1.1-2.1.2-3.1.6 3.1.4-3.2.4-4.1.2
			
			
 	 	  	 
EDP			
00567214	00607210	00627210	00647210
00567224	00607220	00627220	00647220
00567234	00607230	00627230	00647230
00567244	00607240	00627240	00647240
00567254	00607250	00627250	00647250
00567264	00607260	00627260	00647260
00567274	00607270	00627270	00647270
00567284	00607280	00627280	00647280
00567294	00607290	00627290	00647290
00567304	00607300	00627300	00647300
00567314	00607310	00627310	00647310

MACHOS  
TAPAS

# BSP.Tr

BS (Rc)

## ROSCA STANDARD INGLESA CÔNICA PARA TUBO

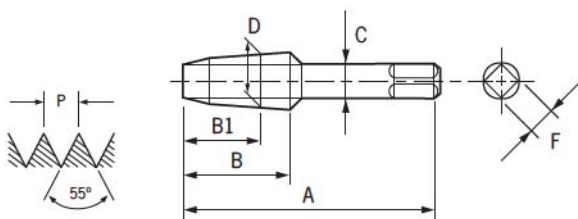
REFERÊNCIA	108/B
GRUPO DE MATERIAIS	1.1.1 - 1.2.1 - 1.2.2 - 1.2.3 - 1.4.1 - 1.4.2 1.6.1 - 2.1.1 - 2.1.2 - 3.1.4 - 3.1.5 - 3.1.6 3.2.1 - 3.2.2 - 3.2.3 - 3.2.4 - 4.1.1
TIPO DE FURO	

### OSG MACHOS ROSCA STANDARD INGLESA

Cônica para Tubo : BS 21


### OSG BRITISH STANDARD

Taper Pipe Taps : BS 21



### ESPECIFICAÇÃO DO PRODUTO



BSP.Tr (Rc) BS 21											EDP
D" in	N/1"	D mm	A mm	B mm	B1 mm	C mm	F mm	Nº de Canais		PESO g	
1/16	28	7,723	51,4	14	9,2	5,600	4,5	4	6,2	11	-
1/8	28	9,728	58,4	15	9,2	8,000	6,3	4	8,2	20	00668210
1/4	19	13,157	66,4	19	14,1	10,000	8,0	4	10,9	40	00668220
3/8	19	16,662	74,4	21	14,5	12,500	10,0	4	14,4	65	00668230
1/2	14	20,955	86,3	26	19,6	16,000	12,5	4	18,0	120	00668240
3/4	14	26,441	95,3	28	20,9	20,000	16,0	4	23,0	230	00668260
1	11	33,249	108,3	33	25,1	25,000	20,0	4	29,0	410	00668280
1 1/4	11	41,410	118,3	36	27,4	31,500	25,0	6	38,0	740	00668300
1 1/2	11	47,803	124,3	37	27,4	35,500	28,0	6	44,0	1180	00668320
2	11	59,614	139,2	41	31,8	40,000	31,5	6	55,0	1550	00668350

**108/B TiN**

1.1.1 - 1.2.1 - 1.2.2 - 1.2.3  
 2.1.1 - 2.1.2 - 3.1.4 - 3.1.6  
 3.1.7 - 3.2.1 - 3.2.4



**EDP**

- 00668214
- 00668224
- 00668234
- 00668244
- 00668264
- 00668284
- 00668304
- 00668324
- 00668354