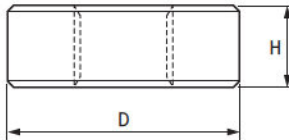
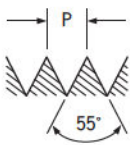


OSG COSSINETES

Rosca Whitworth para Tubo : DIN 529 BS 2779 ISO 228/1
Aço Rápido

OSG ROUND DIES

Whitworth Pipe Thread : DIN 529 BS 2779 ISO 228/1
HSS



REFERÊNCIA

118

118 C

ENTRADA

COM "PEELING"

SEM "PEELING"



ESPECIFICAÇÃO DO PRODUTO



BSP (G) DIN 529 BS 2779 ISO 228/1

d" in	N/1"	D x H mm	Nº de Furos para Cavacos	PESO g
1/8	28	38 x 10	4	65
1/4	19	38 x 10	4	55
3/8	19	45 x 14	5	110
1/2	14	45 x 14	6	90
5/8	14	55 x 18	6	170
3/4	14	65 x 18	6	280
7/8	14	65 x 18	6	270
1	11	65 x 18	7	260
1 1/8	11	75 x 20	7	380
1 1/4	11	75 x 20	7	350
1 3/8	11	90 x 22	7	620
1 1/2	11	90 x 22	8	570
1 3/4	11	90 x 22	9	480
2	11	105 x 22	9	710

EDP

05008210	05018210
05008220	05018220
05008230	05018230
05008240	05018240
05008250	05018250
05008260	05018260
05008270	05018270
05008280	05018280
05008290	05018290
05008300	05018300
05008310	05018310
05008320	05018320
05008340	05018340
05008350	05018350

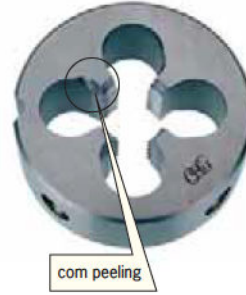
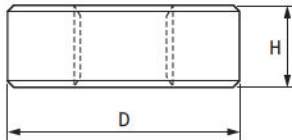
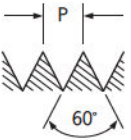
REFERÊNCIA	119/A	119/A
ENTRADA	COM "PEELING"	SEM "PEELING"

OSG COSSINETES

Rosca Standard Americana Cônica para Tubo
ANSI B1.20.1 - Para roscas com materiais de vedação
Aço Rápido

OSG ROUND DIES

American Standard Taper Pipe Thread
ANSI B1.20.1 - For threads with sealing material
HSS



ESPECIFICAÇÃO DO PRODUTO



NPT ASME B1.20.1					EDP	
d" in	N/1"	D x H mm	Nº de Furos para Cavacos	PESO g		
1/16	27	30 x 11	4	65	05007210	05017210
1/8	27	38 x 10	4	65	05007220	05017220
1/4	18	38 x 15	4	80	05007240	05017240
3/8	18	45 x 15	5	115	05007250	05017250
1/2	14	45 x 19	6	140	05007260	05017260
3/4	14	65 x 20	6	320	05007270	05017270
1	11 1/2	65 x 25	7	370	05007280	05017280
1 1/4	11 1/2	75 x 25	7	440	05007290	05017290
1 1/2	11 1/2	90 x 25	8	650	05007300	05017300
2	11 1/2	105 X 27	9	870	05007310	05017310