

# M

## DIN 223-B

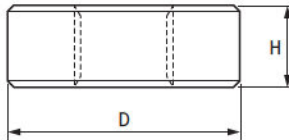
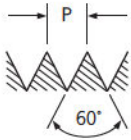
# ROSCA MÉTRICA GROSSA

### OSG COSSINETES

Rosca Métrica Grossa : DIN 13. ISO 724/965.1  
Aço Rápido

### OSG ROUND DIES

Metric Coarse Thread : DIN 13. ISO 724/965.1  
HSS



REFERÊNCIA	105/8	105/8 C
ENTRADA	COM "PEELING"	SEM "PEELING"

### ESPECIFICAÇÃO DO PRODUTO



M DIN 13. ISO 724/965.1					EDP	
d mm	P mm	D x H mm	Nº de Furos para Cavacos	PESO g		
M 3	0.5	20 x 5	4	8	05000170	05010170
M 3.5	0.6	20 x 5	4	8	05000190	05010190
M 4	0.7	20 x 5	4	8	05000200	05010200
M 4.5	0.75	20 x 7	4	11	05000220	05010220
M 5	0.8	20 x 7	4	11	05000230	05010230
M 6	1	20 x 7	4	11	05000250	05010250
M 7	1	25 x 9	4	21	05000260	05010260
M 8	1.25	25 x 9	4	21	05000270	05010270
M 9	1.25	25 x 9	4	21	05000280	05010280
M 10	1.5	30 x 11	4	38	05000290	05010290
M 11	1.5	30 x 11	4	38	05000300	05010300
M 12	1.75	38 x 14	4	83	05000310	05010310
M 14	2	38 x 14	4	78	05000320	05010320
M 16	2	45 x 18	4	130	05000330	05010330
M 18	2.5	45 x 18	5	145	05000340	05010340
M 20	2.5	45 x 18	5	135	05000350	05010350
M 22	2.5	55 x 22	5	260	05000360	05010360
M 24	3	55 x 22	5	250	05000370	05010370
M 27	3	65 x 25	5	410	05000380	05010380
M 30	3.5	65 x 25	6	395	05000390	05010390
M 33	3.5	65 x 25	6	375	05000400	05010400
M 36	4	65 x 25	6	375	05000410	05010410

# MF

## DIN 223-B

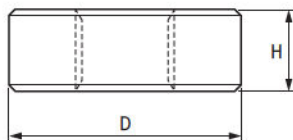
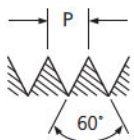
# ROSCA MÉTRICA FINA OSG SULAMERICANA

### OSG COSSINETES

Rosca Métrica Fina : DIN 13. ISO 724/965.1  
Aço Rápido

### OSG ROUND DIES

Metric Fine Thread : DIN 13. ISO 724/965.1  
HSS



REFERÊNCIA	105/9	105/9 C
ENTRADA	COM "PEELING"	SEM "PEELING"



### ESPECIFICAÇÃO DO PRODUTO



MF DIN 13. ISO 724/965.1					EDP	
d mm	P mm	D x H mm	Nº de Furos para Cavacos	PESO g		
M 3	0.35	20 x 5	4	8	05001170	05011170
M 3.5	0.35	20 x 5	4	8	05001180	05011180
M 4	0.35	20 x 5	4	8	05001190	05011190
M 4	0.5	20 x 5	4	8	05001210	05011210
M 5	0.5	20 x 5	4	7	05001230	05011230
M 6	0.5	20 x 5	4	7	05001250	05011250
M 6	0.75	20 x 7	4	7	05001700	05011700
M 7	0.75	25 x 9	4	22	05001720	05011720
M 8	0.5	25 x 9	4	21	05001290	05011290
M 8	0.75	25 x 9	4	21	05001740	05011740
M 8	1	25 x 9	4	21	05001960	05011960
M 9	1	25 x 9	4	20	05001980	05011980
M 10	0.75	30 x 11	4	35	05001780	05011780
M 10	1	30 x 11	4	37	05002000	05012000
M 10	1.25	30 x 11	4	37	05002520	05012520
M 11	1	30 x 11	4	35	05002020	05012020
M 12	1	38 x 10	4	56	05002040	05012040
M 12	1.25	38 x 10	4	55	05002530	05012530
M 12	1.5	38 x 10	4	60	05002550	05012550
M 14	1	38 x 10	4	57	05002080	05012080
M 14	1.25	38 x 10	4	57	05002540	05012540
M 14	1.5	38 x 10	4	57	05002560	05012560
M 15	1	38 x 10	4	57	05002100	05012100
M 15	1.5	38 x 10	4	57	05002570	05012570
M 16	1	45 x 14	5	110	05002110	05012110
M 16	1.5	45 x 14	5	130	05002580	05012580
M 18	1	45 x 14	5	100	05002130	05012130
M 18	1.5	45 x 14	5	110	05002600	05012600
M 18	2	45 x 14	5	105	05002940	05012940
M 20	1	45 x 14	6	100	05002150	05012150
M 20	1.5	45 x 14	6	100	05002610	05012610
M 20	2	45 x 14	6	90	05002950	05012950
M 22	1.5	55 x 16	6	165	05002620	05012620

COSSINETES ROUND DIES

PRÓXIMA

# MF

## DIN 223-B

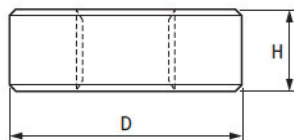
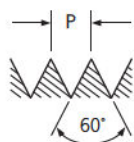
# ROSCA MÉTRICA FINA

### OSG COSSINETES

Rosca Métrica Fina : DIN 13. ISO 724/965.1  
Aço Rápido

### OSG ROUND DIES

Metric Fine Thread : DIN 13. ISO 724/965.1  
HSS



REFERÊNCIA	105/9	105/9 C
ENTRADA	COM "PEELING"	SEM "PEELING"



### ESPECIFICAÇÃO DO PRODUTO



ANTERIOR	MF DIN 13. ISO 724/965.1					EDP	
	d mm	P mm	D x H mm	Nº de Furos para Cavacos	PESO g		
	M 22	2	55 x 16	6	180	05002960	05012960
	M 24	1.5	55 x 16	6	170	05002630	05012630
	M 24	2	55 x 16	6	160	05002970	05012970
	M 26	1.5	55 x 16	6	270	05002650	05012650
	M 28	1.5	65 x 18	6	280	05002670	05012670
	M 30	1.5	65 x 18	6	260	05002680	05012680
	M 32	1.5	65 x 18	7	260	05002690	05012690
	M 33	1.5	65 x 18	7	250	05002700	05012700
	M 36	1.5	65 x 18	7	230	05002720	05012720





# UNF

DIN 223-B

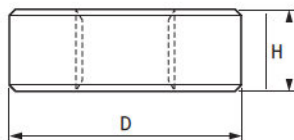
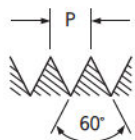
## ROSCA UNIFICADA FINA

### OSG COSSINETES

Rosca Unificada Fina : ASME B1.1  
Aço Rápido

### OSG ROUND DIES

Unified Fine Thread : ASME B1.1  
HSS



REFERÊNCIA	106/9	106/9 C
ENTRADA	COM "PEELING"	SEM "PEELING"



### ESPECIFICAÇÃO DO PRODUTO



UNF ASME B1.1					EDP	
d" in	N/1"	D x H mm	Nº de Furos para Cavacos	PESO g		
Nº 4	48	20 x 5	4	8	05004340	05014340
Nº 5	44	20 x 5	4	8	05004350	05014350
Nº 6	40	20 x 5	4	8	05004360	05014360
Nº 8	36	20 x 5	4	8	05004370	05014370
Nº 10	32	20 x 7	4	11	05004380	05014380
Nº 12	28	20 x 7	4	10	05004390	05014390
1/4	28	20 x 7	4	10	05004400	05014400
5/16	24	25 x 9	4	22	05004410	05014410
3/8	24	30 x 11	4	38	05004420	05014420
7/16	20	30 x 11	4	36	05004430	05014430
1/2	20	38 x 10	4	58	05004440	05014440
9/16	18	38 x 10	4	53	05004450	05014450
5/8	18	45 x 14	5	110	05004460	05014460
3/4	16	45 x 14	5	100	05004470	05014470
7/8	14	55 x 16	5	180	05004480	05014480
1	12	55 x 16	6	170	05004490	05014490
1 1/8	12	65 x 18	6	290	05004500	05014500
1 1/4	12	65 x 18	7	270	05004510	05014510
1 3/8	12	65 x 18	7	255	05004520	05014520
1 1/2	12	75 x 20	7	360	05004530	05014530





