

# BSW

DIN 223-B

## ROSCA WHITWORTH GROSSA

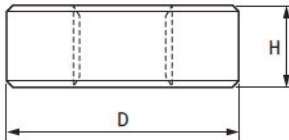
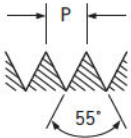
## OSG SULAMERICANA

### OSG COSSINETES

Rosca Whitworth Grossa : BS 84 (DIN 11)  
Aço Rápido

### OSG ROUND DIES

Whitworth Coarse Thread : BS 84 (DIN 11)  
HSS



### ESPECIFICAÇÃO DO PRODUTO



BSW (W) BS 84 (DIN 11)				
d" in	N/1"	D x H mm	Nº de Furos para Cavacos	PESO g
3/32	48	16 x 5	3	4
1/8	40	20 x 5	4	8
5/32	32	20 x 5	4	8
3/16	24	20 x 7	4	12
7/32	24	20 x 7	4	11
1/4	20	20 x 7	4	10
5/16	18	25 x 9	4	22
3/8	16	30 x 11	4	39
7/16	14	30 x 11	4	38
1/2	12	38 x 14	4	80
9/16	12	38 x 14	4	80
5/8	11	45 x 18	4	140
3/4	10	45 x 18	5	135
7/8	9	55 x 22	5	260
1	8	55 x 22	5	235
1 1/8	7	65 x 25	5	400
1 1/4	7	65 x 25	6	375
1 3/8	6	65 x 25	6	360
1 1/2	6	75 x 30	6	600
1 5/8	5	75 x 30	7	600

EDP	
05007610	05017610
05007620	05017620
05007630	05017630
05007640	05017640
05007650	05017650
05007660	05017660
05007680	05017680
05007690	05017690
05007700	05017700
05007710	05017710
05007720	05017720
05007730	05017730
05007750	05017750
05007770	05017770
05007780	05017780
05007790	05017790
05007800	05017800
05007810	05017810
05007820	05017820
05007830	05017830

COSSINETES  
ROUND DIES

